

PULSE

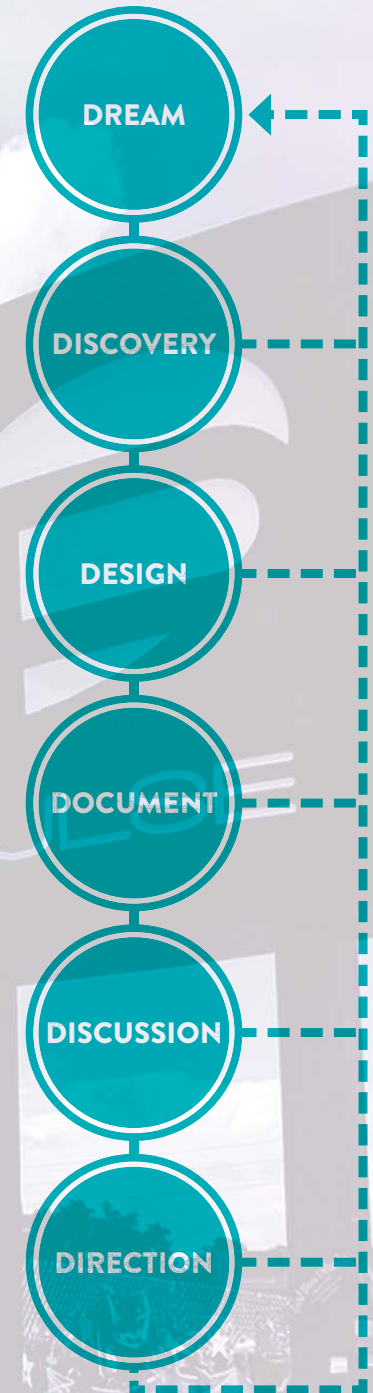
CELEBRATING
LIFE



THE 6 D's

The task force will be engaged to take ownership and responsibility in the plan's vision. The process begins with a clear definition of the **DREAM** and continues through **DISCOVERY** of important facts, issues, and opportunities.

These steps lead to **DESIGN** of desired outcomes and **DISCUSSION** of these designs for further evaluation. The next part of this design process is to **DOCUMENT** an actionable, prioritized set of implementation plans that can help establish frameworks. **DIRECTION** is then provided during the construction phase.



DREAM/ DISCOVER

PROGRAM ELEMENTS

Message wall and canvas

Framed views to building and waterfall

Display of victims' names and photographs

Fence surrounding building and controlled access

Protection of sign

Two points of access

Shade and comfort

Seating

Landscape area

Art exhibition

Flower area

Place for visitors to leave offerings

First responder tree

Defined edges

Lighting

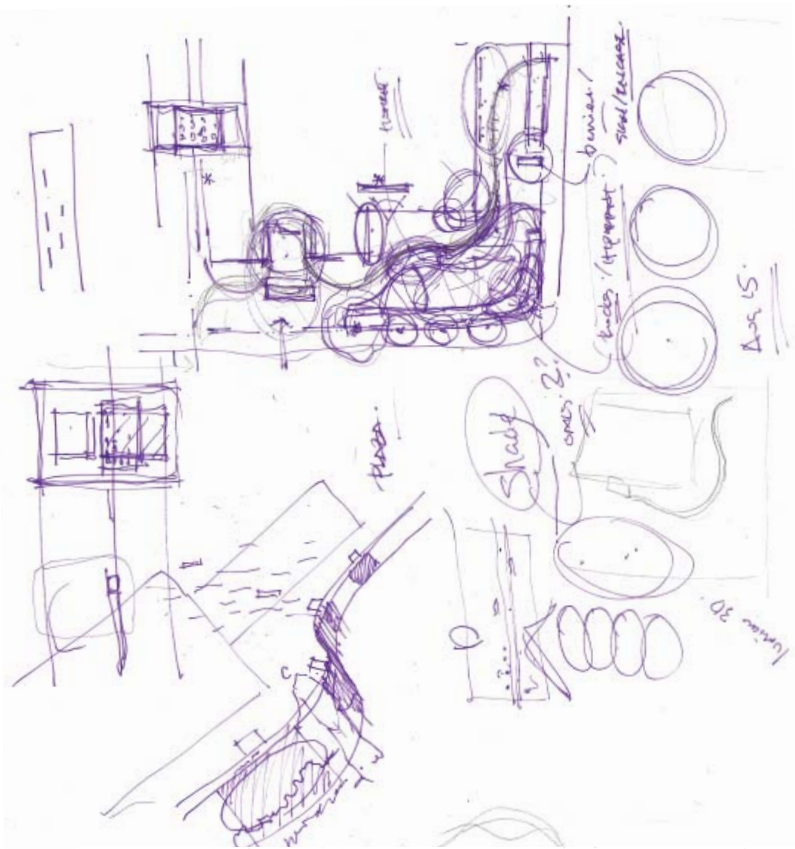


DESIGN GOAL

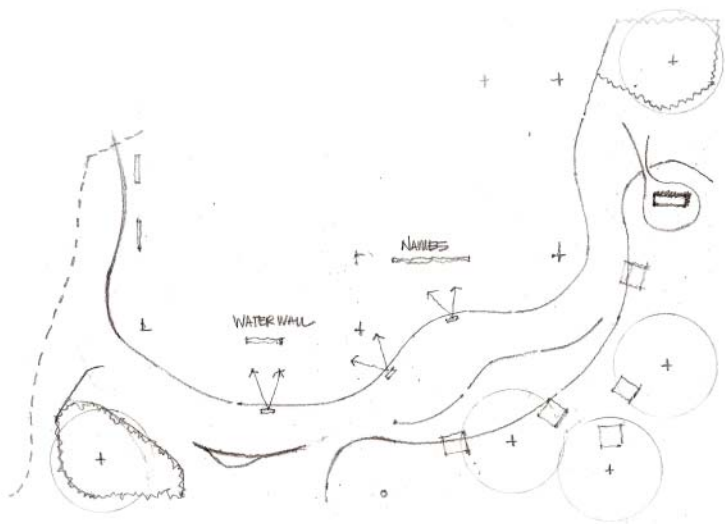
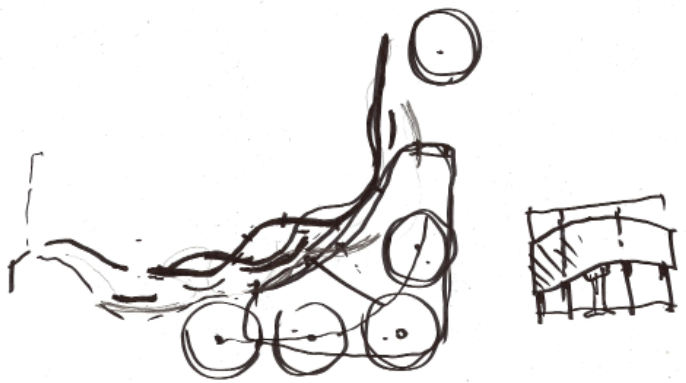
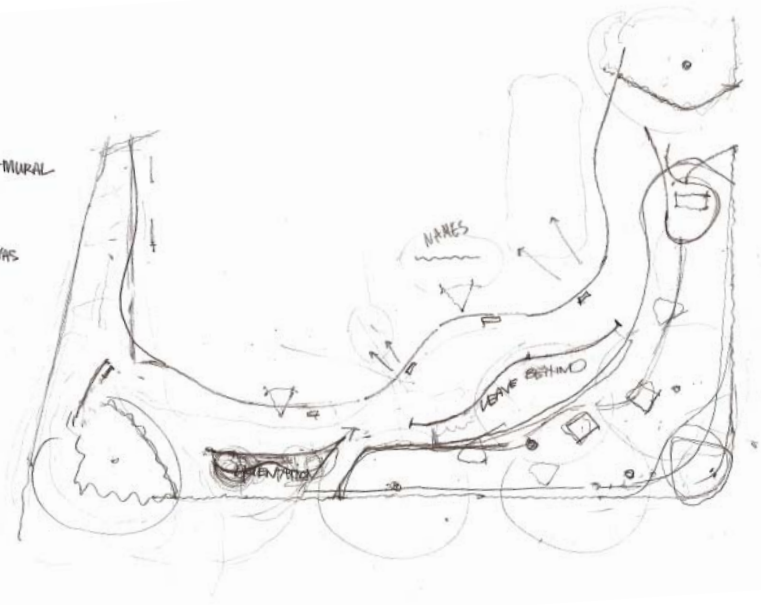
To provide organization to the existing site with well-defined and maintainable edges for people to pay respects until such a time that the construction of the memorial begins.

DESIGN

PRELIMINARY CONCEPTS



- PRIMARY RIBBON
 - WALLS
 - VIEWS/PTS
- SECONDARY RIBBON
 - REPLACEABLE CANVAS
 - MEMORY ITEMS





VIEW FROM W. ESTHER ST.



VIEW FROM ORANGE AVE.

ORIENTATION



PROPERTY LINE

BUILDING

PROPERTY LINE

W. ESTHER STREET

ORANGE AVENUE



ORIENTATION

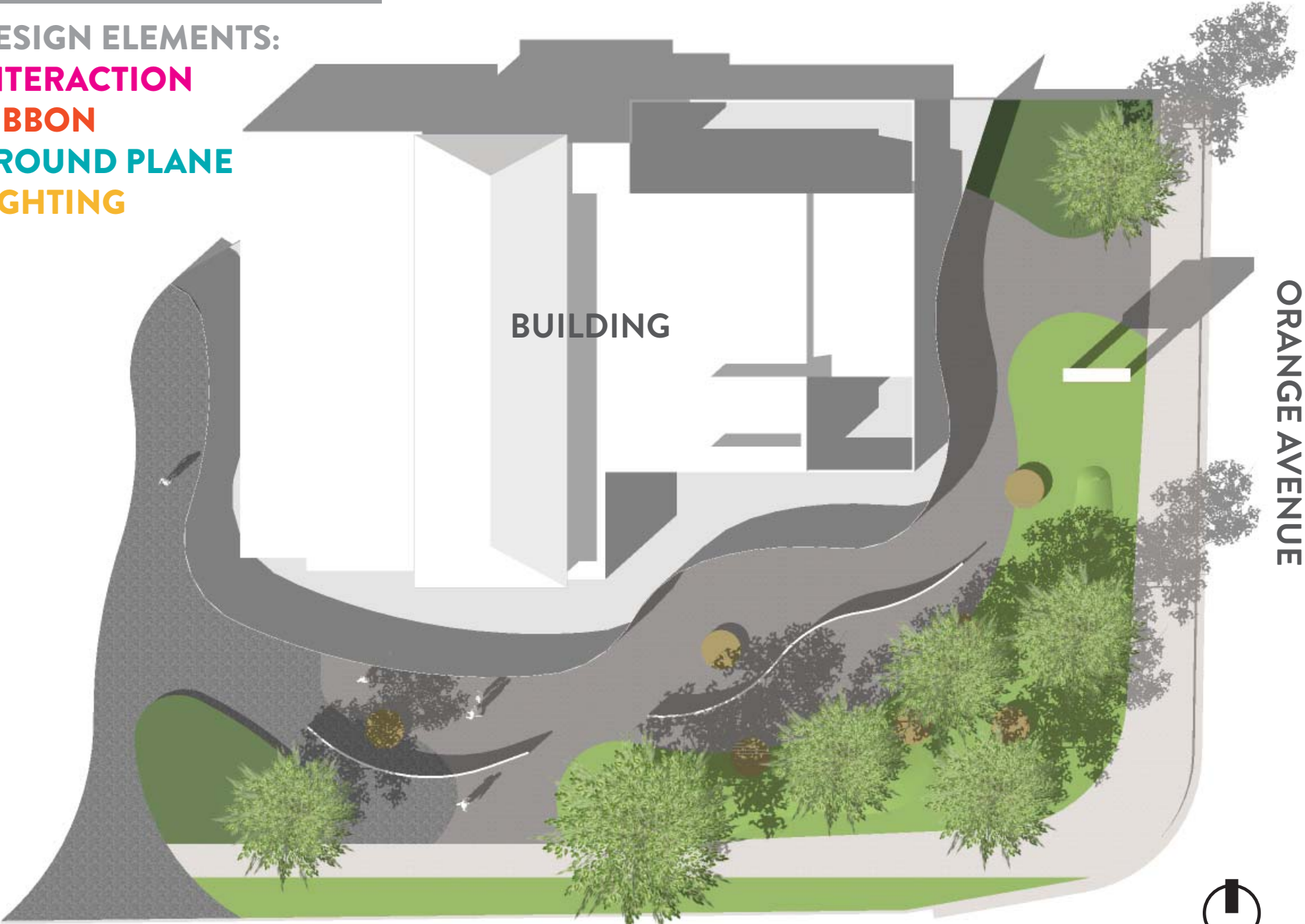
DESIGN ELEMENTS:

INTERACTION

RIBBON

GROUND PLANE

LIGHTING



BUILDING

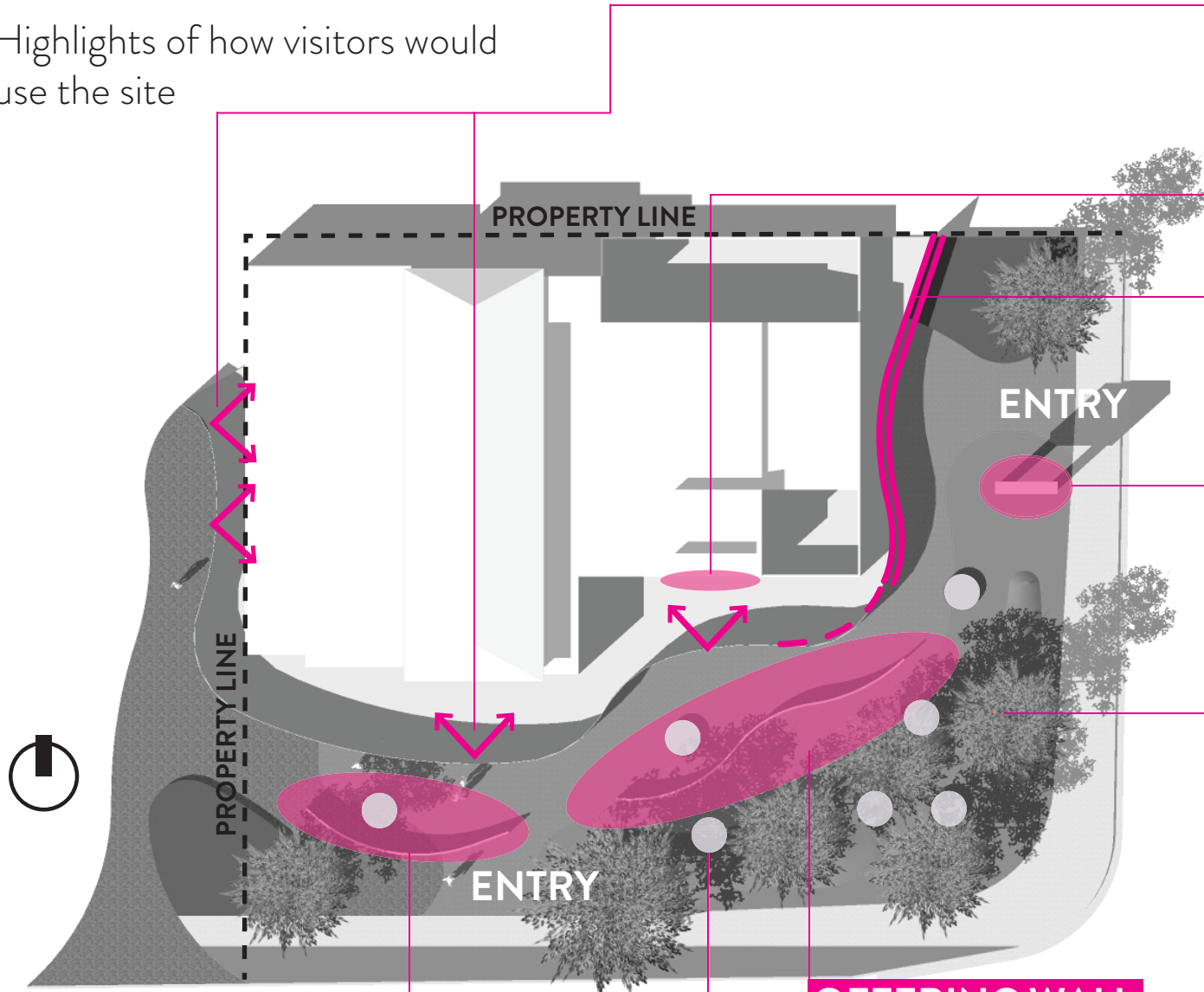
ORANGE AVENUE

W. ESTHER STREET



INTERACTION

Highlights of how visitors would use the site



FRAMED VIEWS

Framed views to the building allow for moments of reflection and remembrance

VICTIM NAMES AND PHOTOGRAPHS

MURAL

Compelling and highly visible graphic from Orange Avenue

MESSAGE CANVAS

Canvas wrap around base of sign for visitors to leave messages

SURVIVOR GROVE

Tree grove provides shade and respite for comfort and gathering

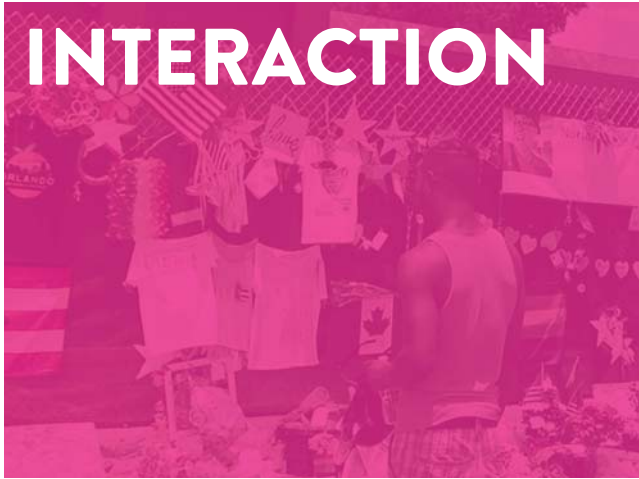
ORIENTATION WALL

Introduction, proper conduct and requests

BENCHES

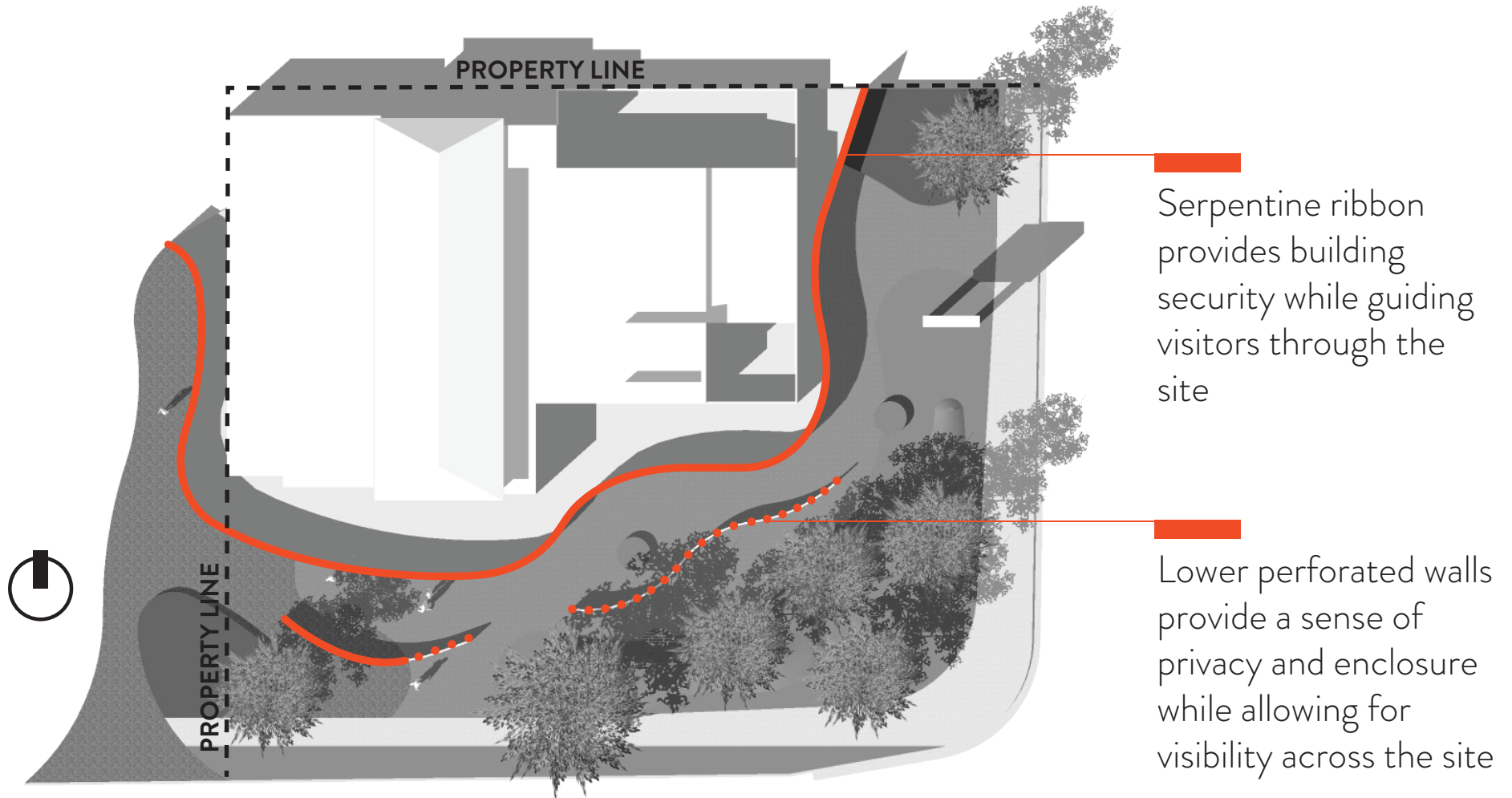
OFFERING WALL

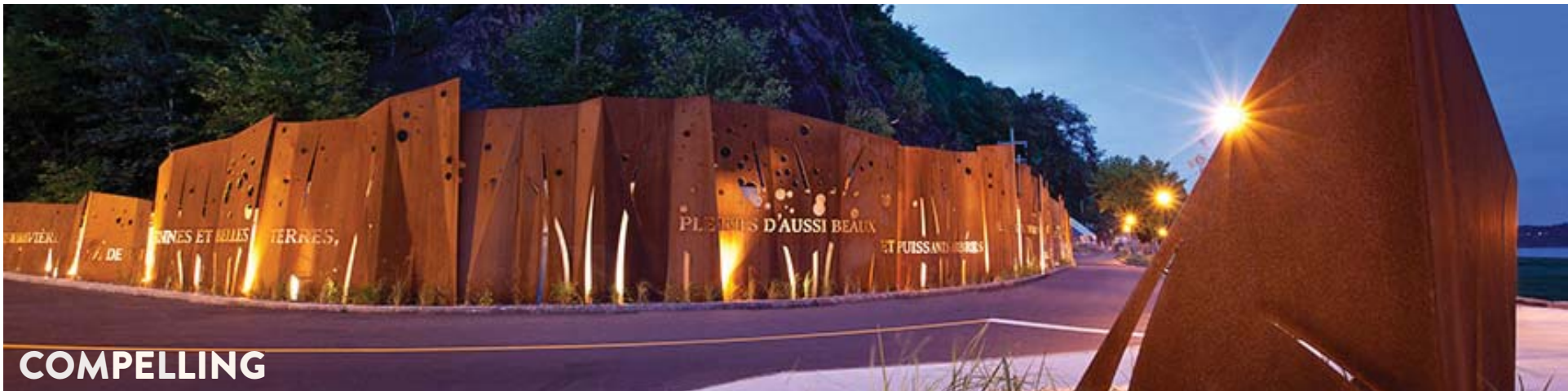
Creates a space for visitors to leave flowers and other offerings in honor of the victims



RIBBON

Organize a framework for visitor interaction with the site.





RIBBON



REMEMBRANCE



MOVEMENT



ART



OFFERING

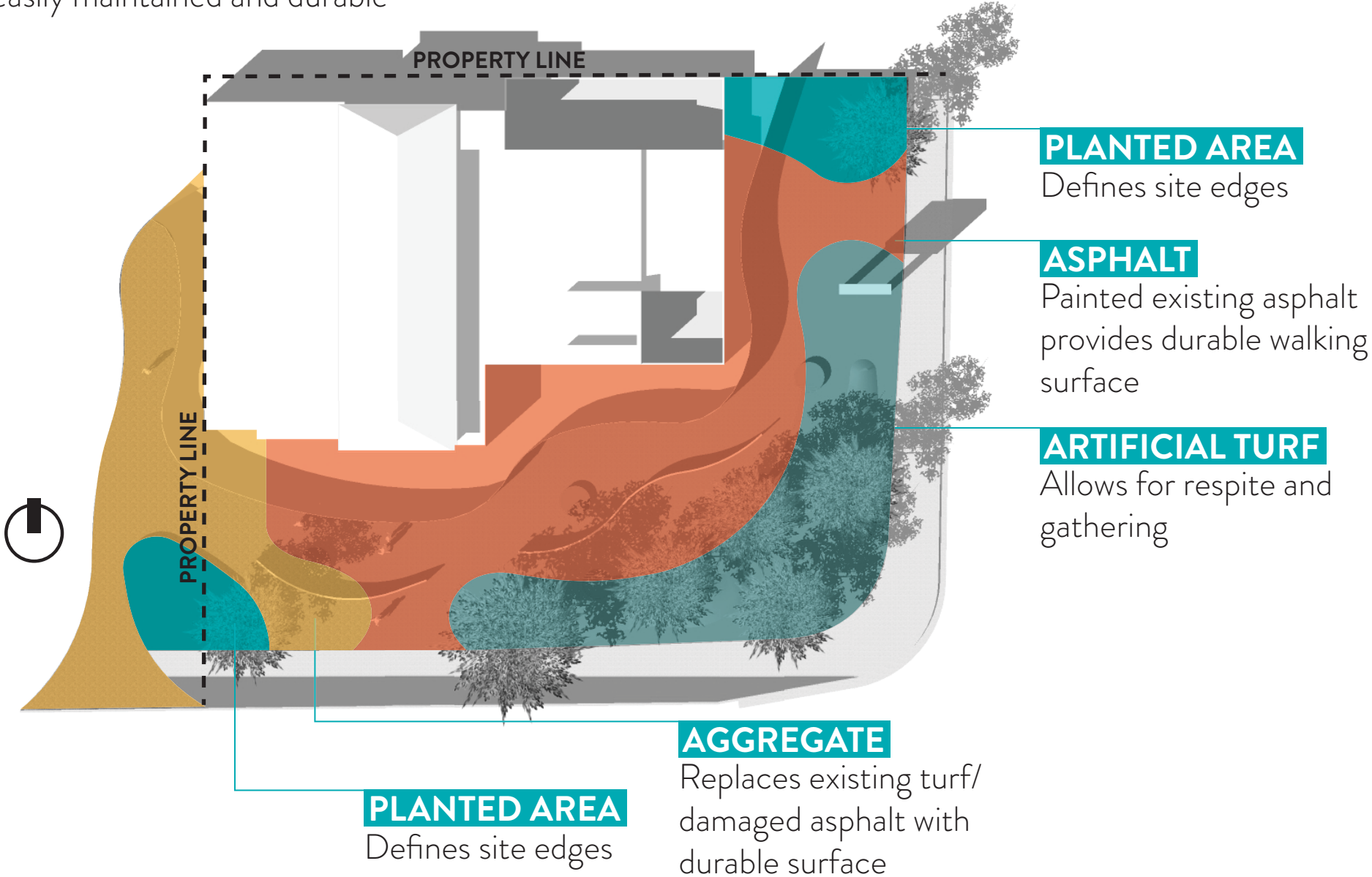


INTERACTIVE

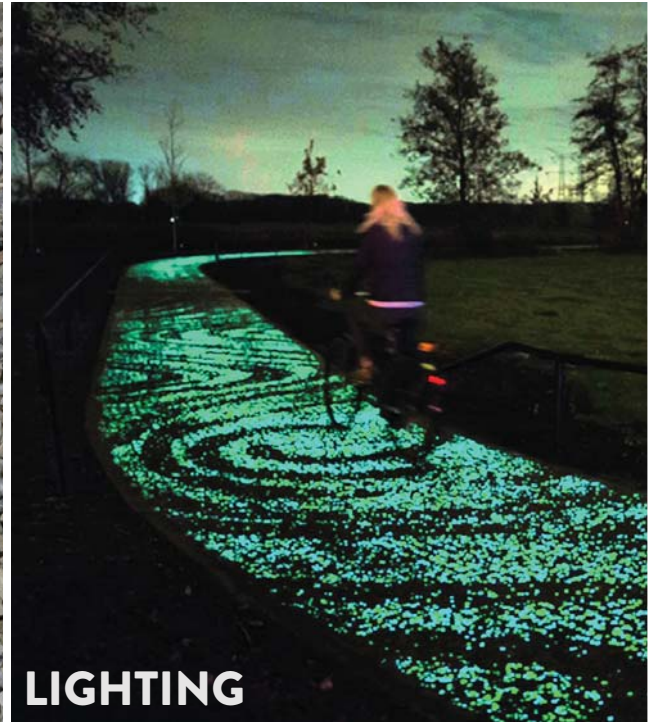


GROUND PLANE

Provides a sense of movement throughout the site while being easily maintained and durable

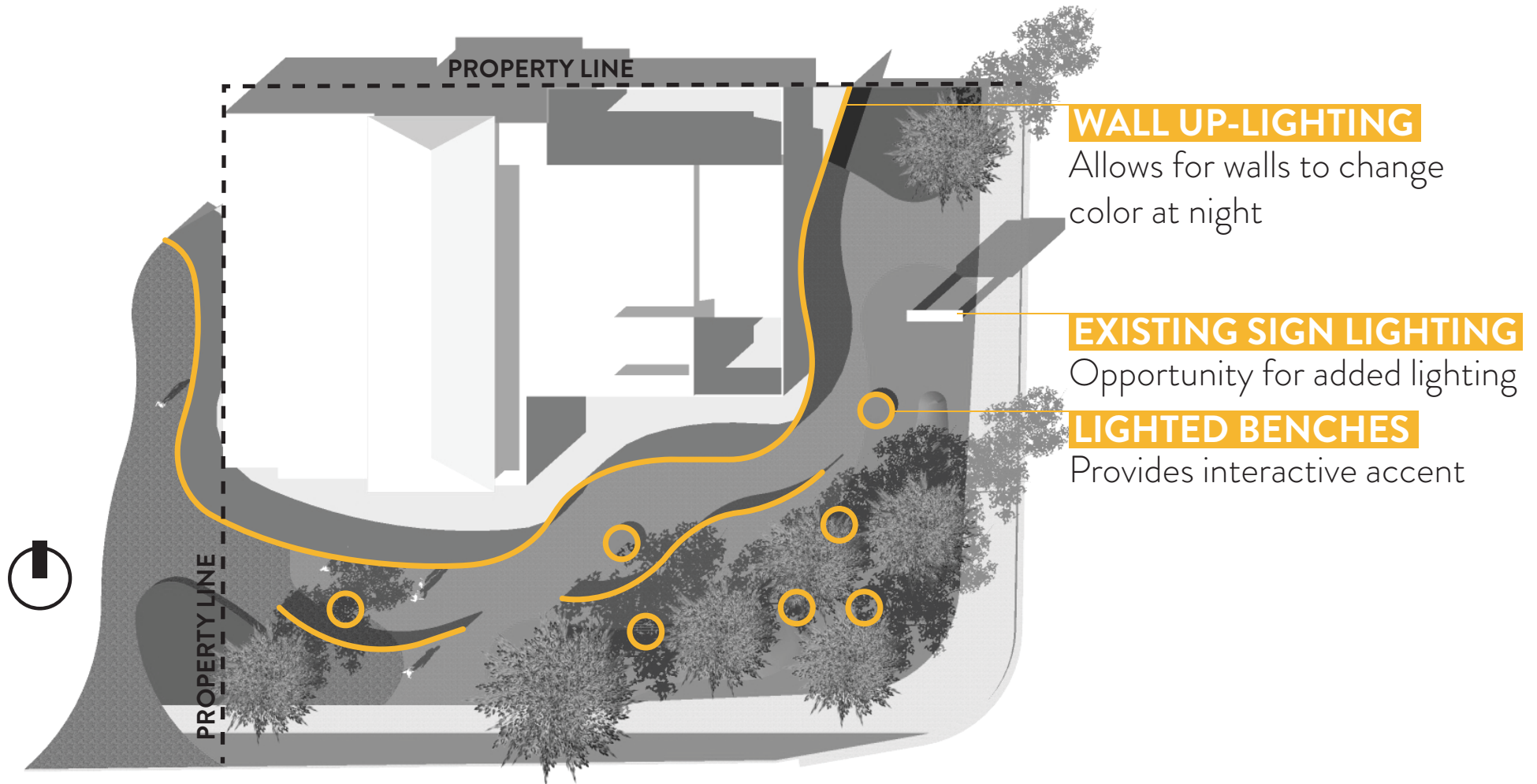


GROUND PLANE



LIGHTING

Provides high visibility and transformation from day to night



LIGHTING



CONTEMPLATION

COLOR CHANGE



ILLUMINATION

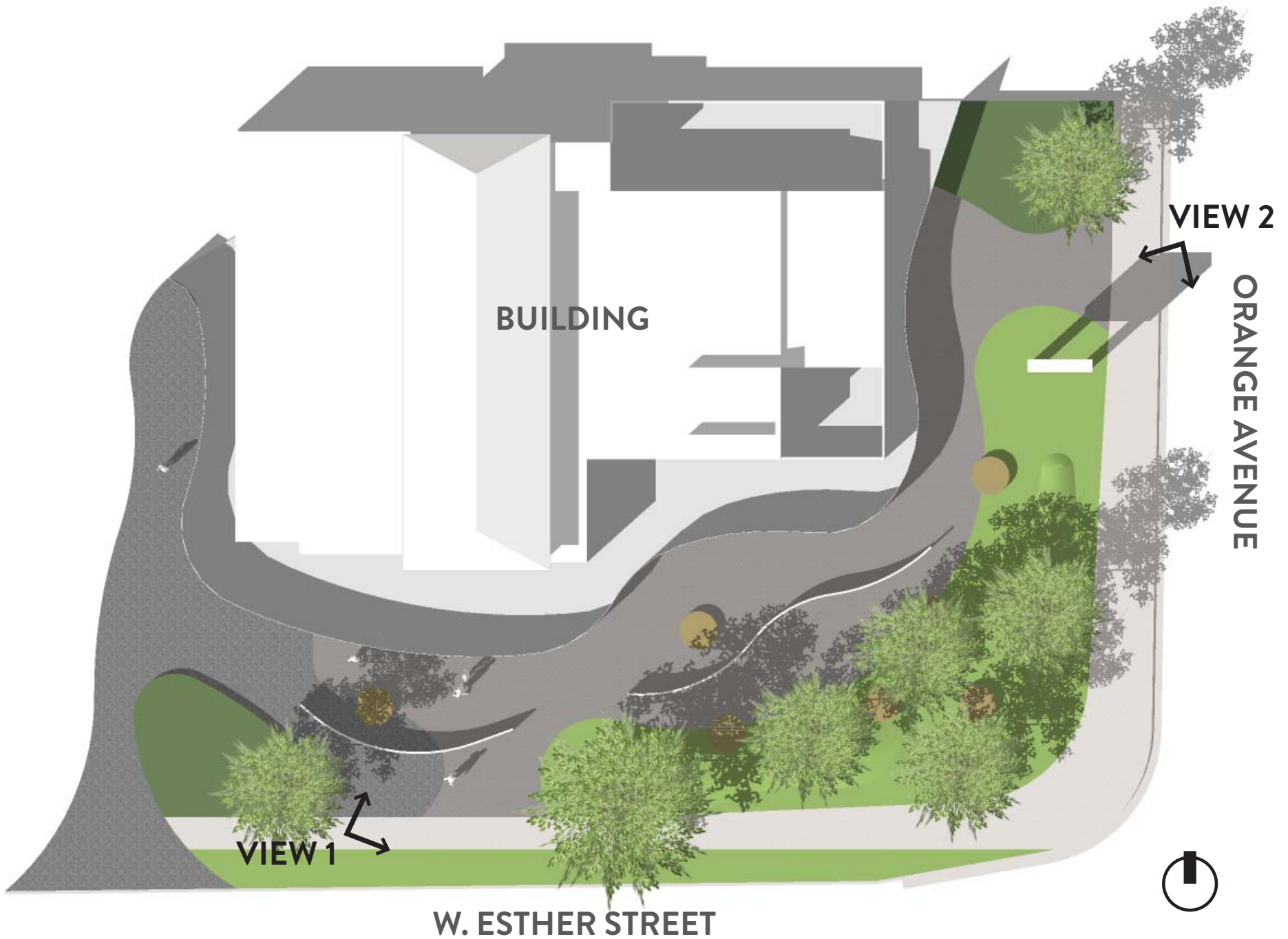


RAINBOW



ACCENT





BUILDING

VIEW 2

ORANGE AVENUE

VIEW 1

W. ESTHER STREET





VIEW 1 FROM W. ESTHER ST. (existing conditions)



VIEW 1 FROM W. ESTHER ST. (proposed interim design)



VIEW 2 FROM ORANGE AVE. (existing conditions)



VIEW 2 FROM ORANGE AVE. (proposed interim design)

An architectural rendering showing a modern building with large glass windows and a curved facade. The building is surrounded by a landscaped area with various trees, a winding path, and a paved area. The scene is presented in a cutaway style, showing the interior of the building. The overall aesthetic is clean and modern.

NEXT STEPS

**DISCUSSION
DOCUMENT
DIRECTION**